

GRIP^{line} R22

EXPERT FRAME

- Long-lasting jaws made of hardened steel.
Tightening up to 25"
- Control pedal has been reshaped to be more ergonomic
- Double speed controlled by pedal
- Powerful two speed bead breaker
- Automatic and air overturning of the operating arm
- Corrosion resistant turntable
- Sturdy main body made for a very frequent use



Made in Italy

ARTICLE / DESCRIPTION

6005 GRIP R22
Power supply: 3-phase
400v - 50/60Hz

6010 GRIP R22 + IRON ARM
Power supply: 3-phase
400v - 50/60Hz

DATASHEET



Working pressure
8 - 10 bar



Turntable tightening
inward 10" - 22" outward 12" - 25"



Tire width
min 3" - max 11"



Maximum tire diameter
1000 mm



Rotation speed
7 - 15 rpm



Weight
ART. 6005: 230 kg
ART. 6010: 320 kg



Dimensions (H x D x L)
1860 x 1660 x 1950 mm



Cardboard box packaging (H x D x L)
1870 x 1150 x 1420 mm

STANDARD ACCESSORIES



Jaws plastic protection



Mounting lever
500 mm



Mounting tool cover



Domounting head tongue
protection



Plastic protection for bead
breaker suitable



Roller board



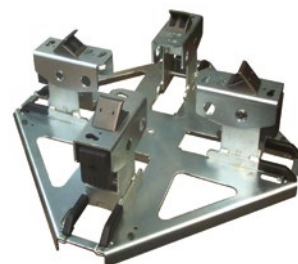
ART. 6206

- Motorbike adaptors GRIP R22/24



ART. 6204

- Bead breaking bearing motorbike wheel



ART. 6205

- Universal adaptor kit for motorbike wheels



ART. 6201

- Iron arm



ART. 6202

- Inflating tubeless kit



ART. 6210

- Kit of 5 demounting head tongue protection



ART. 6211

- Kit of 5 mounting tool covers



ART. 6212

- Plastic mounting/demounting head complete with adaptor



ART. 6208

- Kit of 4 jaws protections GRIP R22



ART. 6209

- Plastic protection for bead breaker suitable



ART. 6214

- Slide lift NG