



# ROLLline R8 SONAR

- Pneumatic locking system (ART. 8020)
- TFT Monitor showing wheel data
- Automatic selecting of balancing programme
- Measurement cycle in 6 seconds
- Internal electronic measuring arm for rim distance & diameter
- Standard external SONAR measure wheel width
- LED Light ring
- Laser pointers
- Threaded screw 40 mm
- Max wheel weight 80 kg

INSTALLATION VIDEO INSTRUCTIONS AVAILABLE



Made in Italy

## ARTICLE / DESCRIPTION

**8015** ROLL R8 SONAR  
Power supply: Single-phase  
220v - 50/60Hz

**8020** ROLL R8 SONAR P-LOCK  
Power supply: Single-phase  
220v - 50/60Hz

## DATASHEET



Accuracy 1 gr



Tire width  
min 1" - max 24"



Tire diameter  
min 6" - max 40"



Rotation speed  
218 - 262 rpm



Max wheel weight  
80 kg



Weight  
ART. 8015: 175 kg  
ART. 8020: 182 kg



Dimensions ( H x D x L )  
1830 x 1270 x 1260 mm



Cardboard box packaging ( H x D x L )  
1130 x 950 x 1140 mm

## STANDARD ACCESSORIES



- Threaded screw with block 40 mm
  - Quick nut
- 3 cones from 42 to 111,5 mm (ART. 8015)



- Threaded screw with block 40 mm
  - Quick nut
- 4 cones from 43 to 110 mm (ART. 8020)



- Weight pliers
- Calibration weight
- Weights removal blade
- Weight sample

## EXTRA OPTIONS FOR WHEEL BALANCER ROLL R8 SONAR



**ART. 8207**

- Motorbike flange kit



**ART. 8208**

- Motorbike threaded screw kit 19 mm with bushes



**ART. 8204**

- 9 precision bushes kit from 52,5 to 122 mm



**ART. 8205**

- Flange kit for ring without central hole



**ART. 8209**

- Quick nut



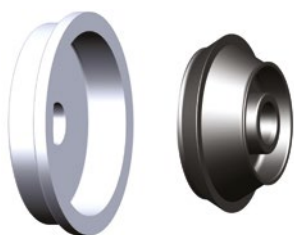
**ART. 8210**

- Locking cap



**ART. 8211**

- Rubber gasket for alloy wheels



**ART. 8201**

- Van wheel kit, hole dim. 122-174 mm



**ART. 8202**

- Slide lift



**ART. 8203**

- Fourth cone 95 - 132 mm